



Company Profile

2022

DESIGN DESIGN LLC. provides professional Interior Design Services including design consultation and contracting as well as undertaking turn key projects.

IN BRIEF

DESIGN DESIGN LLC. is the essence of years of professional practice experienced by a multi-national team. The completed projects include state of the art offices, hotels, lounges, banks, educational institutes, restaurants and coffee shops, retail spaces, and prominent residential villas.

**“WHY BE DIFFERENT WHEN
YOU CAN BE UNIQUE?”**





table of content

01 ABOUT US	4
02 PHILOSOPHY / VISION / MISSION	6
03 AWARDS	7
04 PUBLICATIONS	8
05 WHY US?	12
06 OUR SERVICES	13
07 NOTEWORTHY PROJECTS	14
08 LIST OF PROJECTS	24
09 ORGANIZATIONAL STRUCTURE	34

THE COMPANY

A LEADING INTERIOR DESIGN COMPANY IN DUBAI

ABOUT US

DESIGN DESIGN LLC. was established on December 24th, 1998 to provide professional interior design consulting and contracting services inclusive of turnkey projects. DESIGN DESIGN LLC. is the essence of more than 25 years of professional practice experienced by a multi-national team. Our completed projects include state of the arts offices, five-star hotels, banks, large-scale institutes and HQs, retail boutiques and high end residences including penthouses and mansions.



OUR CLIENTS



THE VALUE OF OUR COMPANY

DEDICATED TO OUR CLIENTS & PROVIDING
QUALITY SERVICES



OUR PHILOSOPHY

Our philosophy is to provide extensive and meticulous details to our projects before commencement of construction.

This approach, along with our thorough project management, enables us to control the cost of the projects, the quality of the work, and the durations for the construction.



OUR MISSION

Our mission is to keep stretching our design abilities beyond our limitations in order to introduce aspirational designs. We also believe in the power of commitment and uphold our responsibility to deliver constantly on our agreement.



OUR VISION

Our vision is to play a major role in the shaping of the interior design industry in the middle east. We aim to provide services on a multi-national level.

AWARDS



Awards
Certificate of Appreciation
Dubai Police
May 25, 2004



Awards
Certificate of Appreciation
TECOM GROUP
February 8, 2017



Awards
Certificate of Appreciation
TECOM GROUP
2018



Award
In recognition of
excellent support
rendered to
Emirates NBD
March 6, 2018



Award
In Appreciation to
the Contribution
in Developing
Emirates NBD
Pavilion in EXPO
2020

**ACHIEVEMENTS OF TODAY ARE
THE STEPPING STONES FOR THE
FUTURE ONES**

- INVAJY

PUBLICATIONS

REGIONAL NEWS

DUBAI: EPOC Messe Frankfurt and Deutsche Messe Branch Dubai have joined up to showcase a complete design spectrum under one roof from 25-27 May 2008 in Dubai. The event, that will take place in the International Exhibition Centre, will mean that Light Middle East, ISH Kitchen and Bath Middle East, Garden and Landscaping Middle East and International CES/Hometech will be exhibited alongside Domotex, the region's only dedicated flooring exhibition. The decision to join the events together was a result of practicalities according to Kent Daniels, director of marketing, EPOC Messe Frankfurt GmbH. "It's more beneficial for visitors to attend one show where they can see a range of different designs under one roof. Hotels in Dubai aren't the cheapest, so from a value point of view it is better for visitors to only have to make the trip to Dubai once rather than on two separate occasions which can be costly."

It is also hoped that the decision will result in a greater number of visitors attending the shows. "By this cooperation in marketing we provide interior products professionals more reasons to visit the fair ground, spend more quality time and therefore enhancing efficiency in business. The new timing for Domotex Middle East also fits perfectly in the region's business calendar," explained Angela Schaschen, managing director of Deutsche Messe Branch Dubai.

The APID delegation, from left: Ken Laidler, Dr. John Alexander Smith and Razem El Khalil.



APID gains IFI membership APID becomes first association from Arab country

APID, the association representing professional interior designers in the UAE and Gulf region, has been given IFI (International Federation of Interior Architects/Designers) membership at the 23rd IFI General Assembly in Busan, South Korea. The successful application means APID is the first association from an Arab country to be given membership to the organisation. The IFI is the principal international body bringing interior architects and designers together in one organisation and represents over 25,000 interior designers from 45 countries worldwide. When asked why APID decided to apply for membership Dr. John Alexander Smith, vice president

of APID said: "APID will benefit from the international recognition and will be in touch with mainstream developments in professional practice that affect this increasingly global vocation. It will benefit from exposure to acknowledged international standards of professional practice as developed by IFI, while confirming that APID standards match international norms." He added: "During Index 2006 the APID stand was visited by many interior designers from other countries whose associations were members of IFI, so we decided in subsequent council meetings to apply ourselves for membership."

The association's inclusion fills the void of Middle East representa-

tion within the international organisation. Smith said that this along with the strength of APID's presentation before the assembly was the reason for their membership. He went on to say that APID intends to put forward a case for representing the entire Gulf region in time for the next IFI General Assembly that will be held in Singapore in 2009. Part of APID's aim is to provide a platform for education and development within the design community by hosting public events comprising of workshops, seminars, exhibitions and lectures. Forthcoming events include the Walls and Floors Forum to be held on November 11 and the Safety in Design Seminar on December 6.

PRESS RELEASE APID GAINS IFI MEMBERSHIP

THURSDAY, 01 NOVEMBER 2007

APID, the association representing professional interior designers in the UAE and Gulf region, has been given IFI (International Federation of Interior Architects/Designers) membership at the 23rd IFI General Assembly in Busan, South Korea. The successful application means APID is the first association from an Arab country to be given membership to the organization. The IFI is the principal international body bringing interior architects and designers together in one organization and represents over 25,000 interior designers from 45 countries worldwide.



APID



As both a founding Member and Board Director of ARD my experience over the last 18 years in Dubai has borne witness to the growing maturity and recognition of the design culture in the UAE and the region. We will soon have a new home in AD which has ARD positioned at the very heart of the future of design and creativity and we will proudly embed the Association into the very fabric of several class Design Weeks.

JOHN CAROLAN
ARD BOARD DIRECTOR



stating that he is proud to be a part of the association and to achieve the goal of helping fellow designers.



"The keen vision of HH Sheikh Mohammed bin Rashid Al Maktoum has made Dubai a world destination. Like a skilful sculptor and a creative designer, His Highness moulded our culture into a society where a dream can become a reality. It is upon us, the community of designers, to follow in the steps of His Highness and exhaust all efforts so that Dubai becomes the design capital of the world."

**HAZEM EL KHATIB
AND RICHARD VOIS, PRESIDENT**

MESSAGE FROM THE PRESIDENT

It is my honour to present this publication, a 10th anniversary commemoration of the accomplishments of The Association of Professional Interior Designers. With deep awareness of the contributions made I am grateful to all the people who made this possible. To the board of directors, the executive council, and our membership - which has been the main pillar of strength, our supporters, well-wishers, the media and the government bodies who have graciously allied with us in our endeavours.

Successful institutions in modern society are neither accidental nor imposed. They are created by collective experience, wisdom and progressive foresight. They serve and guide the community in the best manner by innovating and maintaining institutional standards during shifting economic conditions, workplace transformations and constant advancements in practices and expertise. As an industry platform, APID has accomplished these to the best of its ability by taking initiatives and finding solutions to challenges.

As we complete our 10 years of operation, we look forward to the next decade with anticipation and confidence. The UAE's position and goals are pragmatically aligned with global reality and practices to make it a future hub of innovation and design. An extraordinary period of opportunity is emerging for ARD, while being the only professional association for interior designers in the region; we should take initiatives for the betterment of all things interior design.

We will need to be resourceful and to assist in policy making, in advocating the use of materials that reduce carbon footprint, in assisting the shift of focus from design that now encourages appearance and consumerism to design that shapes attitude and behaviour. ARID will innovate to relate, research to educate and will collaborate with best practices in multiple disciplines for the betterment and profit of society as a whole and the interior design profession in particular. This is my vision.



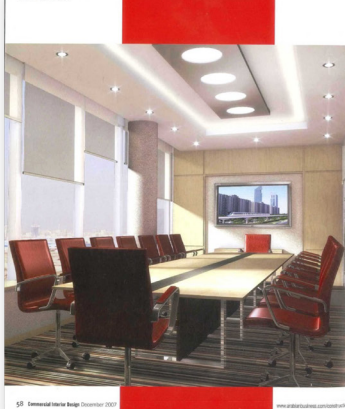
"The Keen vision of H.H. Sheikh Mohammed Bin Rashid Al Maktoum has made Dubai a world destination. Like a skilful sculptor and a creative designer, His Highness molded our culture into a society where a dream can become a reality. It is upon us, the community of designers, to follow in the steps of His Highness and exhaust all efforts so that Dubai becomes the design capital of the World"

HAZFEM FI-KHATIB

APID BOARD VISE PRESIDENT

(2015-2017)

CASE STUDY RTA



58 Commercial Interior Design December 2000

www.enr.construction.com/resources/special/

UNIQUE
Not Different

Corporate colours and hidden messages abound in Design Design's plans for the latest RTA regional HQ



His month sees the opening of the Public Transport Agency and the new headquarters located in Dubai's Metchamkfour Area after just a year in the planning stages and an intensive four months fit-out. The project's conceptual building design was the 'fast track' and Public Transport Agency in a collaborative venture that sees an interesting form of partnership between two of the world's premier transport agencies. The project is a joint venture between the UK's Operational Command Functions (OCF) in addition to the Public Transport Agency. The full-time staff and training facilities for a further 70 people over four floors.

Like *Urbanworks*, projects planning and design managers, OCF says "the vision was to create a world-class transport agency identity for the PTA, offering our

the message would be embedded in all aspects of the design.

The pattern shows movement, staggered lines and gradients that glow and are other parts of the careful design, such as in the meeting rooms; crisscrossed oblique lines in the artificial columns giving the feeling of movement even when the building is still.

Other elements of the design include the sculptural columns or as part of the crisscrossed pattern in the corridors. "Emulating the road network is such a simple message but really effective. It's like a road, embarking in the same curved lines," adds Ed Kohn.

The KIO's passenger lobby is also evident in the bold use of color, translucent, which relays the light's hue. "Each

3. The director's
standing room
on the 10th floor
has panoramic
views.

4. The lobby
is a modern
mix of materials,
including large
panels of glass
and steel.

5. The director's
box has a custom
dark wood finish
and a glass top.

Environmental Interior Design December 2007 61

COMMERCIAL Interior design

The essential guide for Middle East interior design professionals

AWARDS SPECIAL.
The region's winning interior

JAPANESE GLAM

JAPANESE GLAM
Luxurious glamour at the Barj
Al Arab's Jansui restaurant

NETWORK DESIGN
A transport-themed style for

the RTA's latest HQ



COVERUP

This season's wallpapers are bold, brave and beaded.

CASE STUDY PETROFAC



Fashion for Fuel

Organic shapes and a minimalist style are top priorities for Design

Organic shapes and a minimalist style are top priorities for Design's plans for Petrofac designers are still expected to submit operational designs to better fit with a canvas, for this project we presented the company and our capabilities and the results of our design process. In this instance, the design was not a simple task of organic shapes and a minimalist style, but a complex one that required a lot of work and effort to create a design that was both functional and aesthetically pleasing. The design process was a collaborative one, with Design and Petrofac working together to create a design that was both functional and aesthetically pleasing. The design process was a collaborative one, with Design and Petrofac working together to create a design that was both functional and aesthetically pleasing.

1. The design process was a collaborative one, with Design and Petrofac working together to create a design that was both functional and aesthetically pleasing.

64 Commercial Interior Design August 2007

www.commercialinteriordesign.co.uk



CASE STUDY PETROFAC

very collaborative project, with Design and Petrofac working together to create a design that was both functional and aesthetically pleasing. The design process was a collaborative one, with Design and Petrofac working together to create a design that was both functional and aesthetically pleasing. The design process was a collaborative one, with Design and Petrofac working together to create a design that was both functional and aesthetically pleasing.

www.commercialinteriordesign.co.uk

Commercial Interior Design August 2007 45

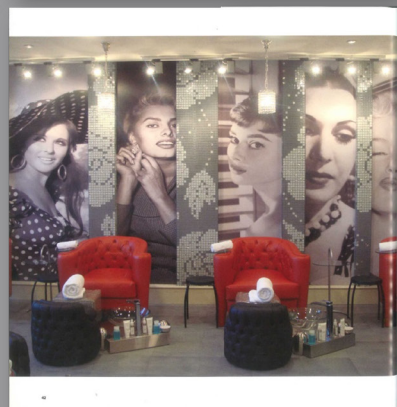


www.commercialinteriordesign.co.uk

www.commercialinteriordesign.co.uk



www.commercialinteriordesign.co.uk



www.commercialinteriordesign.co.uk

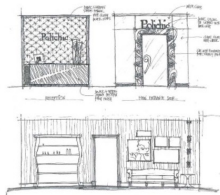


www.commercialinteriordesign.co.uk

[experiences] خبرات

hollywood with love

Design Design LLC Dubai

Design Consultant
Design Design LLC DubaiWork
Palm Jumeirah Beach LoungeLocation
Luxurious Beach Residence Villa - Dubai (LBR Villa)Client
Shahin and Maha Hageed (jointly)Design Team
Maha Hageed, Angela Reyes, Hageed El Khattabi, AshrafDuration of project
Three monthsImage credits
Hageed El Khattabi

The clients walked into the designer's office with a mood board already in hand. They knew what they wanted but they didn't know how to put the pieces together. They wanted something from movies perhaps the classics of the movies. They wanted a timeless design, stylish but not fashionable, unique but not different. They wanted to be distinguished from the typical sea view salon one finds in hotels or elsewhere and give the beachy lounge a different feel.

The positive energy that the clients had provided the design team to put the so-called 'nostalgic hollywood' elements into this 1500-sq-meter space. The concept is strongly visible in every corner of the beachy lounge including the perforated glassware they use for their customers to resemble the 80s, or the red apples at the

entrance that set a reminder of fire. The main feature is perhaps visible in the podium room where the designers went about purchasing the copyrights of the pictures for reproduction. These celebrities represent the 60s and the 70s of the Middle East and the Americas such as Marilyn Monroe and David Bowie. The black and white images are intended to stop the pace of time. Custom-made crystal chandeliers were a classic choice. Glass separations are used as privacy dividers in the hand dryer area. The red polish cabinet is also an over-sized coffee table from the past. The grand mirror by the coffee bar was also inspired by the vintage character that appeared in the movie snow white.

Julius Huber

DESIGN DESIGN LLC
INTERIOR DESIGN SERVICES

Since the assignment of DESIGN DESIGN LLC as the interior design consultant in 2014, the project of Salah Free Zone Headquarters, which is a major element pertaining to the rapid growth in business and the appreciation of the vision which was entrusted by the Salah Free Zone Company. The objective is to create a business hub where investors can enhance their operations into the Salah region with minimum hassle. This mandates the development of a one-stop shop facility incorporating the necessary governmental services, investors' enclosures and business lounges. The interior design study was initiated from a thorough understanding of the operation which is intended in the Salah Free Zone Headquarters. This had imposed on DESIGN DESIGN LLC to conduct a workplace audit with concentration on the logistic and technical requirements from both architectural and interior design aspects.

Mr. Hageed El Khattabi, managing partner of DESIGN DESIGN LLC, stated that the interior design of the SFZ Headquarters reflects the heritage of the Sultanate of Oman, the synergy of the past and the spirit of the new modern evolution. The heritage is depicted in the use of raw materials and traditional Omani patterns, without clinging on the walls reflects the strength and reliability of the SFZ zone, embracing the floor pattern supports the concept of networking. The overall aspect of the design suggests a promising growth which is generated by an equal opportunity network, brought together by the solid operation of the Salah Free Zone. The general mood is one of a contemporary aspect backed by the prominent spirit of the Omani culture. The color scheme is adopted from the surrounding environment with a blue accent wherever from the ocean of the Salah region.

The approach of DESIGN DESIGN LLC in the project states that all interior design drawings should be developed to the utmost details. This meticulous approach helped the project team to reduce and overcome the unnecessary constraints which are common in projects of such scale. This approach could have not been achieved without the wise decision of the CEO of the Salah Free Zone Company, Mr. Abdul Salim Al-Sharhan, who instructed to follow the design and not to deviate from the proposed operations. Thus, the exact front of the SFZ Headquarters evolved identical to the proposed design with a noticeable high standard of finishing.

The senior executive officer, Mr. Mohamed El Ghazal of DESIGN DESIGN LLC, stated that the exquisite work is the result of the endurance and persistency of all members of the project team from the qualified engineers of the Salah Free Zone Company to the dedicated main fit-out contractor and partners.

HAAGEED EL KHATTABI
Managing Partner
DESIGN DESIGN LLC

DESIGN DESIGN LLC - Dubai Silicon Oasis - The Apricot Tower - Suite 108 - PO BOX 34156, Dubai, UAE.
Tel.: +971 (4) 333 7745 - Fax: +971 (4) 333 7748 - web site: www.designdesignllc.com

“

ADVERTISEMENTS CONTAIN
THE ONLY TRUTHS TO BE RELIED ON IN A NEWSPAPER

- THOMAS JEFFERSON

WHY US?



Over 25 years of Business



Honesty and transparency



Proven track record with leading developers, semi-government entities, corporates & celebrity homes



Compete with international designers



Project execution delivered as scheduled every time since 2003



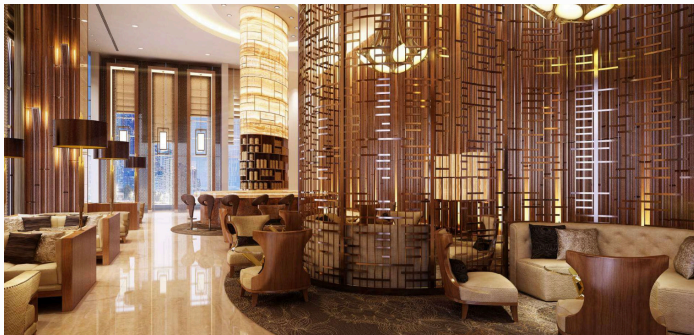
Ability to deliver exactly as designed



OUR SERVICES

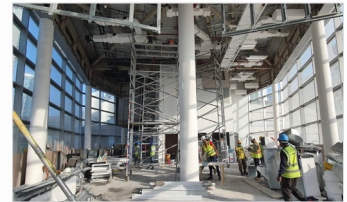
DESIGN DESIGN LLC. provides professional Interior Design services including design consultation and contracting as well as undertaking turn key projects.

**“INTERIOR DESIGN IS MAKING
THE BEST POSSIBLE USE OF
THE AVAILABLE SPACE**



Interior Design Consultancy

Audit the space in line with your requirement to create alluring schematic designs, detailed drawings, specifications and bill of quantities.



Interior Fit-Out Contracting

Execute your project in line with the design to the minute detail. Executions are inclusive of all authority approvals, mechanical, electrical, plumbing and civil works.



Project Management

Manage the work on site in order to ensure the project is handed over according to the design and compliant with the terms of the contract agreement.



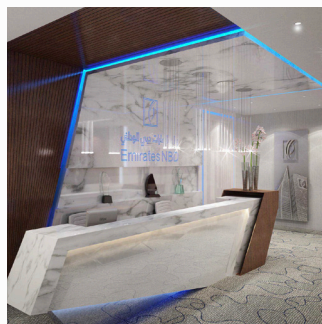
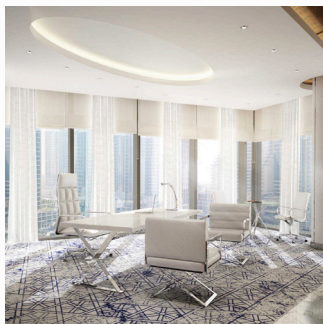
Zine Stone Distribution

Design Design LLC. is proud to introduce Zine Stone as an affordable, green-conscious and convenient solution to decorative surface finishes.

NOTEWORTHY PROJECTS

BANKS

Location: Dubai, UAE
Use: Bank
Client: Emirates NBD
Scope: Design and Execution



Location: Dubai, UAE
Use: Bank
Client: Emirates NBD
Scope: Design



COMMERCIAL/INSTITUTIONAL

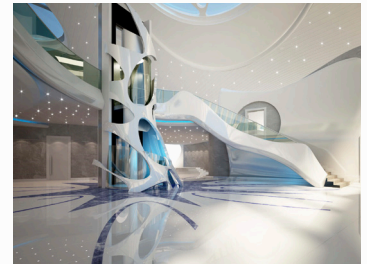
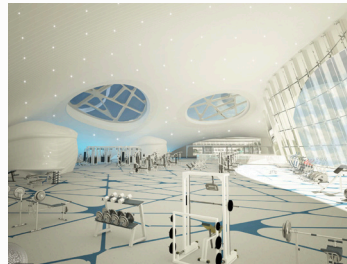
Location: Dubai, UAE
Use: Pre-function Area and Auditorium
Client: ENOC
Scope: Design



Location: Dubai, UAE
Use: VIP Praying Area
Client: EMAAR
Scope: Design & Execution

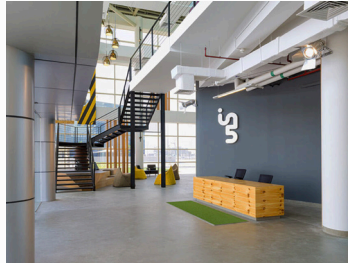


Location: Dubai, UAE
Use: VIP Sports & Healthcare Facility
Client: RTA (The Roads & Transports Authority)
Scope: Design & Supervision



COMMERCIAL/INSTITUTIONAL

Location: Dubai, UAE
Use: Multi Media Institute
 & Facility
Client: Tecom Group
Scope: Design & Supervision



Location: Dubai, UAE
Use: Hi Tech Savvy & Facility
Client: Tecom Group
Scope: Design & Supervision



Location: Dubai, UAE
Use: Government Institute
Client: EREC (Emirates Real
 Estate Corporation)
Scope: Design & supervision



HOTEL

Location: Dubai, UAE
Use: Hospitality
Client: Rotana Hotel Mgmt. Corp.
Scope: Design & Supervision



Location: Dubai, UAE
Use: Hospitality
Client: EMAAR Properties
Scope: Design Consultation
& Partial Execution



Location: Dubai, UAE
Use: Hotel Welcome Center
Client: Mandarin Oriental
Scope: Design & Execution



OFFICES

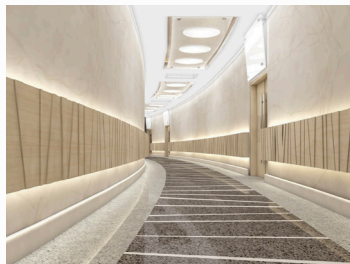
Location: Dubai, UAE
Use: CEO Office
Client: ENOC
Scope: Design and Execution



Location: Dubai, UAE
Use: Tecom Group
Client: Educational Establishment
Scope: Execution



Location: Dubai, UAE
Use: Administration Office
Client: Government of Dubai
Scope: Design & Supervision

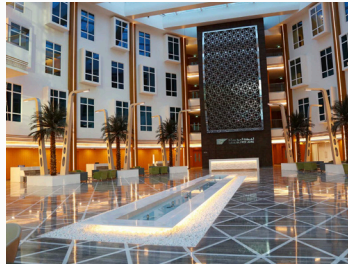


OFFICES

Location: Dubai, UAE
Use: Educational Establishment
Client: Tecom Group
Scope: Design



Location: Salalah, Oman
Use: Government Facility
Client: The Salalah Free Zone Authority
Scope: Design & Supervision



Location: D3
Use: Office
Client: Pentagram
Scope: Design & Execution



RESIDENTIAL

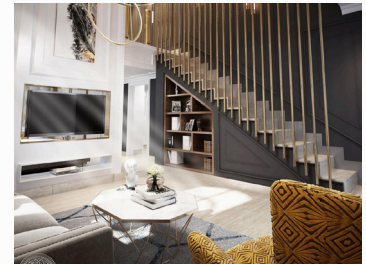
Location: Dubai, UAE
Use: Private Villa
Client: Confidential
Scope: Design and Supervision



Location: Dubai, UAE
Use: Show Villa
Client: EMAAR
Scope: Execution



Location: Dubai, UAE
Use: Private Villa
Client: Confidential
Scope: Design



RESIDENTIAL

Location: Dubai
Use: Mansion
Client: H.H Sheikh Hasher
Al Maktoum
Scope: Design & Build



Location: Dubai Hills Estate
Use: Mansion
Client: H.H Princess
Moneerah
Scope: Design



RETAIL

Location: Dubai, UAE
Use: Hotel Retail
Client: The Royal Atlantis
Scope: Tender



Location: Dubai, UAE
Use: Shopping Mall
Client: EMAAR Properties
Scope: Fit-Out & Execution

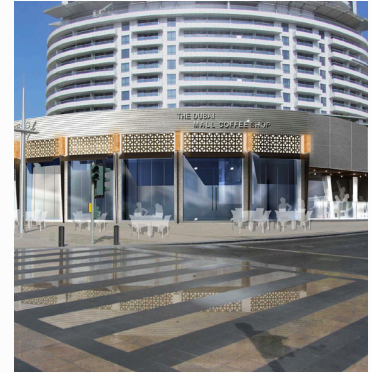


RETAIL

Location: Dubai, UAE
Use: Marketing Stand
Client: Chevrolet
Scope: Design proposal



Location: Dubai, UAE
Use: Coffee Shops
Client: EMAAR Properties
Scope: Design & Supervision



LIST OF PROJECTS

Description	Project Type	Task	Location	Year
Emirates Bank International (EBI) in Hor Al Anz Branch	Bank	Design & Supervision	Dubai	2007
Emirates Bank International (EBI) in Al Nahda Branch	Bank	Design & Supervision	Dubai	2007
Emirates Bank International (EBI) in Al Mamzar Branch	Bank	Design & Supervision	Dubai	2007
Emirates Bank International (EBI) in Sharjah Branch	Bank	Design & Supervision	Sharjah	2007
Emirates Bank International (EBI) in Ajman Branch	Bank	Design & Supervision	Ajman	2007
Opera Shoes in Souk Al Bahar in Downtown Burj Khalifa	Retail	Design & Execution	Dubai	2007
Falcon Museum & Exhibition Centre	Commercial	Design & Execution	Dubai	2007
Opera Shoes in Outlet Mall	Retail	Design & Execution	Dubai	2008
Arab Emirates Invest Bank in DFC	Bank	Design & Execution	Dubai	2008
Offices of Convergys International	Corporate	Design & Execution	Dubai	2008
Private Villa of H.H. Sheikh Sheikhah Bint Surour Al Nahyan	Residential	Design & Execution	Abu Dhabi	2008
ABAYA Retail Shop in The Dubai Mall	Retail	Design & Execution	Dubai	2008
Private Farm House of H.H. Sheikh Ahmed Bin Tahnoon Al Nahyan in Kra'a	Residential	Design & Execution	Al Ain	2008
Pelli Capelly Nail Bar Saloon in JBR	Commercial	Design & Execution	Dubai	2008
Opera Shoes in JBR	Retail	Design & Execution	Dubai	2008
Arab Bank PLC. In Al Taawun Mall	Bank	Design & Execution	Dubai	2008
Hircon Offices in Emaar Business Park	Corporate	Design	Dubai	2008
Cyrcus Popcorn in Bur Juman Centre	Retail	Design & Execution	Dubai	2008
Cyrcus Popcorn in Reef Mall	Retail	Design & Execution	Dubai	2008
Technogym Exhibition Stand	Retail	Design & Execution	Dubai	2008
WORLD GYM in Al safa	Commercial	Design & Execution	Dubai	2008
Best Food Outlet in Mega Mall	Retail	Design & Execution	Sharjah	2009

Description	Project Type	Task	Location	Year
Private Villa of Dr. Mansoor Al Awaar	Residential	Design & Execution	Dubai	2009
Private Villa of Mr. Fathi Buhazza	Residential	Design & Execution	Abu Dhabi	2009
Al Hilal Bank, on Muroor Street	Bank	Design & Execution	Abu Dhabi	2009
VIP Lounge in Abu Dhabi International Airport	Institutional	Design & Execution	Abu Dhabi	2009
Best Food Outlet in Soueihat	Retail	Design & Execution	Dubai	2009
Headquarters of the General Authority of Youth and Sports Welfare	Institutional	Design and Supervision	Dubai	2009
Private Duplex in Rabweh; Beirut	Residential	Design & Execution	Lebanon	2009
Best Food Outlet in Jumeirah	Retail	Design & Execution	Dubai	2009– 2010
La Roche Chocolate & Flower Shop	Retail	Design & Execution	Abu Dhabi	2009 - 2010
Nail Blaze Beauty Saloon in Al Nahda	Commercial	Design	Dubai	2010
Private Villa of Mr. Abdul Aziz Jamea in Mizher	Residential	Design	Dubai	2010
Private Villa of Mr. Abdullah Jamea in Khawaneej	Residential	Design	Dubai	2010
Private Villa of Mr. Belay Tekle in Addis Ababa	Residential	Design	Ethiopia	2010
Best Food Outlet in Soueihat	Retail	Design & Execution	Dubai	2009
Headquarters of the General Authority of Youth and Sports Welfare	Institutional	Design and Supervision	Dubai	2009
Private Duplex in Rabweh; Beirut	Residential	Design & Execution	Lebanon	2009
Best Food Outlet in Jumeirah	Retail	Design & Execution	Dubai	2009– 2010
ADIB - Abu Dhabi Islamic bank – Ladies Branch in Nad Al Hamar	Bank	Design & Supervision	Dubai	2010
Commercial Building for the Emirates Real Estate Corporation (EREC)	Commercial	Design	Abu Dhabi	2010
Private Villa of Mr. Bashir Al Shabeh	Residential	Design	Dubai	2010
ARA Art Gallery for Miss Moza Al Abbar	Commercial	Design & Execution	Dubai	2010
VIP Private Study and Social Lounge	Residential	Design & Execution	Abu Dhabi	2010
Offices of Convergys in DIC	Corporate	Design & Execution	Dubai	2010
Home Theatre & Villa Entrance of Mr. Saad Al Ikhdayer	Residential	Design & Execution	Abu Dhabi	2011
ADIB - Abu Dhabi Islamic Bank – Design and Establishment of Standard Manual for Ladies Branches	Bank	Design	Abu Dhabi	2011
Private Villa of Ms. Aisha Miran in Al Khawaneej	Residential	Design	Dubai	2011
Offices of Asian Cement Trading Co. in Julfar Towers	Corporate	Design	Ras Al Khaimah	2011

Description	Project Type	Task	Location	Year
ADIB - Abu Dhabi Islamic Bank – Sharjah Branch	Bank	Design	Sharjah	2011
Offices of Al Sultan Industrial Cement Factory	Corporate	Design	Abu Dhabi	2011
SPA Shop in The ADDRESS DUBAI MALL Hotel	Retail	Design & Execution	Dubai	2011
EMAAR - SPA Shop in THE ADDRESS DOWNTOWN Hotel	Retail	Design & Execution	Dubai	2011
Offices of Omran Darwish Advocates & Legal Consultants	Corporate	Design & Execution	Dubai	2011
Qatar Consulate General	Institution	Maintenance	Dubai	2011
Private Villa of Mr. Fahad Al Saadi	Residential	Design	Dubai	2011
Private Villa of Mr. Naeem Fekr in Al Wasel	Residential	Design	Dubai	2011
Private Villa of Mr. Dafer Halawa in Al Hamra	Residential	Execution	Ras Al Khaimah	2011
EMAAR - The "SOUK" retail area in The Dubai Mall	Shopping Mall	Execution	Dubai	2012 - 2011
Extension of Emirates Invest Bank in Dubai Festival City	Bank	Design	Dubai	2012
Main Entrance Lobby, Pre-function Area, and VIP Majlis of SCA - Security & Commodities Authority Building in Umm Ramool	Institution	Design	Dubai	2012
EMAAR - Renovation of the Reception Counter in THE ADDRESS DUBAI MALL Hotel	Hospitality	Design & Execution	Dubai	2012
EMAAR - Renovation of Reception Counter in THE ADDRESS DOWNTOWN Hotel	Hospitality	Design & Execution	Dubai	2012
VIP Private Villa In Emirates Hill	Residential	Construction Drawings	Dubai	2012
ADIB - Abu Dhabi Islamic Bank Branch on Khalidiya Street	Bank	Design	Abu Dhabi	2012
EMAAR - Private Musalla on Level 160' of Burj Khalifa	Institutional	Design & Execution	Dubai	2012
EMAAR - Hair Dressing Saloon at THE ADDRESS DOWNTOWN Hotel	Hospitality	Design & Execution	Dubai	2012
EMAAR - Auxiliary Entrance to the "SOUK" from the Aquarium area in The Dubai Mall	Retail	Design	Dubai	2012
EMAAR - Partial Renovation of THE PALACE, The Old Town Hotel	Hospitality	Design & Execution	Dubai	2012
EMAAR - Development of 7 Nos. Food and Beverage Outlets on the Boulevard of Downtown Burj Khalifa	Retail	Design & Supervision	Dubai	2012
VVIP Private Health Club in Nad Al Sheba	Institutional	Design	Abu Dhabi	2012
EMAAR - Sales Office of M/s EMAAR in Erbil	Corporate	Design	Iraq	2012
EMAAR - Auxiliary Entrance of Armani Peck Lounge in The Armani Hotel at Burj Khalifa	Hospitality	Design & Execution	Dubai	2012-2013

Description	Project Type	Task	Location	Year
EMAAR - Conversion of South West Terrace on Level 14 of THE ADDRESS DOWNTOWN Hotel into Luxury 2 & 1 Bedrooms Penthouse	Hospitality	Design & Supervision	Dubai	2012-2013
The Ruler's Court, Director General Office, Training Centre at Mohammad Bin Rashid Centre for Leadership	Institutional	Design & Execution	Dubai	2012-2013
Private Villa of Mr Saeed Al Hajeri in Lahbab	Residential	Design & Supervision	Dubai	2012-2013
EMAAR - Movie Theaters & Games Rooms on Level 18 at Burj Khalifa	Institutional	Design	Dubai	2013
EMAAR - Prayer Room & Ablution areas in Building 3 at EMAAR Square	Institutional	Design & Execution	Dubai	2013
EMAAR - Renovation of the Reception Counter In THE ADDRESS MARINA Hotel	Hospitality	Design & Execution	Dubai	2013
Private Apartment in Al Mas Tower	Residential	Design & Execution	Dubai Marina	2013
EMAAR - Bar Lounge at Cabana Cafe In THE ADDRESS DUBAI MALL Hotel	Hospitality	Design & Execution	Dubai	2013
EMAAR - Extension of THE DUBAI MALL On Lower Ground Level	Retail	Design	Dubai	2013
Private Villa of H. H. Sheikh Ahmed Bin Tahnoon Al Nahyan in Kra'a	Residential	Design & Supervision	Al Ain	2013
EMAAR - Renovation work for the "SOUK" Corridor and Dome Junction Entrance Portal In The Dubai Mall	Retail	Design & Execution	Dubai	2013
Private Villa of Miss Hind Musabab Al Fattan	Residential	Production of ID Construction Drawings & Documents	Dubai	2013
EMAAR - The Dubai Mall L.G. Broadwalk – Government VIP Kiosk Unit	Retail	Design & execution	The Dubai Mall	2013
EMAAR - Palma Community Villa at Wadi Al Safa – 121 Villas	Residential	Production of ID Construction Drawings & Documents	Dubai	2013
EMAAR - Reem /Mira Community Compound – 1300 Townhouses	Residential	Production of ID Construction Drawings & Documents	Dubai	2013
EMAAR - La Casa Community at Wadi Al Safa 253 – 7 Villas	Residential	Production of ID Construction Drawings & Documents	Dubai	2013
EMAAR - Photos Stand at The Dubai Mall	Retail	Design & Execution	The Dubai mall	2013
Partial Renovation of Private Villa for Mr. Manoj Shivani in Emirates Hills	Residential	Design & Execution	Dubai	2013 - 2014
Private Villa in Al Mizher 2nd.	Residential	Design	Dubai	2013 - 2014
Private Gymnasium for H.H. Sheikh Manea Bin Jumea Al Maktoum	Residential	Design & Execution	Dubai	2013 - 2014
Private Villa of Mr. Al Ansari on Plot No. 159 in Um Al Shaif	Residential	Design & Execution	Dubai	2013 - 2014
Private Villa for Mr. Fadi Nuwaila in The Executive Extension	Residential	Design & Execution	Palm Dubai	2013 - 2014

Description	Project Type	Task	Location	Year
Private Villa at H19 Emirates Hills	Residential	Design	Dubai	2013 - 2014
Al Asfour Showroom in Bin Dhafer Centre: Sheikh Zayed Road	Retail	Design	Dubai	2014
Emirates NBD - Renovation of Emirates NBD GHQ Building into an Office Tower	Corporate	Design & Supervision	Dubai	2014
Emirates NBD - Partial renovation of the executive office on the 9th. Floor of Emirates NBD Head Quarters	Corporate	Design & Execution	Dubai	2014
Emirates NBD- Typical Space Management & Development of Furniture Standards	Corporate	Design	Dubai	2014
EMAAR - Type V2 Luxury Show Villa in Mohammed Bin Rashid City	Residential	Execution	Dubai	2014
TECOM - Temporary Sales Office & Show Apartment for Marina Gate Towers	Residential	Design & Execution	Dubai Marina	2014
Private Villa on 49th. Street in Al Safa	Residential	Design & Execution	Dubai	2014
The Salalah Free Zone Company Head Quarters	Corporate	Design	Salalah; Oman	2014
Point Zero Flotation –SPA & Relaxation Center	Commercial	Design & Execution	Dubai	2014
Building Entrance Of Green Panorama Tower	Commercial	Execution	Dubai	2014
Partial Renovation of Private Villa in the Arabian Ranches for Mr. Ali Odeh	Residential	Design & Execution	Dubai	2014
New Technogym Showroom and Office	Commercial	Design & Supervision	Dubai	2015
Emirates NBD- Motor City Branch	Bank	Design & Supervision	Dubai	2015
Emirates NBD -Dalma Branch	Bank	Design & Supervision	Abu Dhabi	2015
Podium unit Entrance at The Address Hotel Dubai Mall	Hospitality	Design & Execution	Dubai	2015
Emirates NBD - Immigration Pay office at Dubai International Airport Terminal 1	Bank	Design & Supervision	Dubai	2015
Refurbishment Of Emirates NBD GHQ Building in Deira Dubai (G1+st Floor	Bank	Design & Supervision	Dubai	2015
Emirates NBD - Departure Area D Office at Dubai International Airport Terminal 1	Bank	Design & Supervision	Dubai	2015
EMAAR - Retail Kiosk in Souk Al Bahar ,The Dubai Mall	Retail	Design & Execution	Dubai	2015
Emirates NBD -Jumeirah Beach Road Branch	Bank	Design & Supervision	Dubai	2015
Emirates NBD - Front Access ATM Area at Al Fattan Tower	Bank	Design & Supervision	Dubai	2015
Abu Dhabi TV (Sport Studio) - The Renovation of The Main Entrance & Common Public Areas	Institutional	Design & Execution	Abu Dhabi	2015
GGICO - Residential Tower on Plot NO 198- 392 at Al Marza	Residential	Design	Dubai	2015
The Sales Center in Al Habtoor City Residences & Show Apartment	Residential	Design	Dubai	2015

Description	Project Type	Task	Location	Year
Emirates NBD Headquarters in Meydan, Block -M	Bank	Design & Supervision	Dubai	2016
Concept Piping System - Exhibition Booth for The Big 5 Show in Dubai World Trade Center	Retail	Design & Execution	Dubai	2016
The Dubai Mall - Design of Information Counters	Retail	Design	Dubai	2016
TECOM - Dubai Wholesale City Sales Office at Dubai Studio City	Corporate	Design & Execution	Dubai	2016
Emirates NBD - Al Qusais Branch	Bank	Design & Supervision	Dubai	2016
Emirates NBD - Galleria Branch	Bank	Design & Supervision	Dubai	2016
Emirates NBD - Al Ain Branch	Bank	Design & Supervision	Al Ain	2016
Emirates NBD - Mankhool Branch	Bank	Design & Supervision	Dubai	2016
Emirates Investment Bank offices located on the 15th floor of Festival Tower	Bank	Design & Supervision	Dubai	2016
Renovation Work for the LIVE Broadcast facilities Offices Phase I	Commercial	Design & Execution	Abu Dhabi	2016
Emirates Investment Bank offices located on the 17th floor of Festival Tower	Bank	Design	Dubai	2016
Emirates NBD - Dubai Design District Branch (d3)	Bank	Design & Supervision	Dubai	2016
Emirates NBD - Burj Al Arab Branch	Bank	Design	Dubai	2016
Emirates NBD - Convention Center - DWTC	Bank	Design & Supervision	Dubai	2016
Emirates NBD - New Deira Branch	Bank	Design & Supervision	Dubai	2016
TECOM - Dubai Institute of Design and Innovation (DIDI) at Building 4 in Dubai Design District (d3)	Institutional	Design	Dubai	2016-2017
TECOM - INS Media at DPC Gate Building	Institutional	Design & Supervision	Dubai	2016-2017
TECOM - INS Tech at Dubai Internet City	Institutional	Design & Supervision	Dubai	2016-2017
TECOM - Jewel Center at Dubai Science Park	Institutional	Design & Supervision	Dubai	2016-2017
EMAAR - The Replacement of Suspended Ceiling in Burj Views Tower	Residential	Execution	Dubai	2017
TECOM - Waterproofing Work In DPC Gate	Institutional	Execution	Dubai	2017
ENOC - The Design & Execution of decorative lights on all Façades of ENOC Building located at ENOC Complex	Commercial	Design & Execution	Dubai	2017
Emirates NBD - Jeddah Branch	Bank	Design & Supervision	KSA	2017
Emirates NBD - Riyadh Branch	Bank	Design	KSA	2017
Emirates NBD - Al Khobar Branch	Bank	Design	KSA	2017
Emirates NBD - Jumeirah Al Wasl - Ground Floor & Private Banking	Bank	Design & Supervision	Dubai	2017

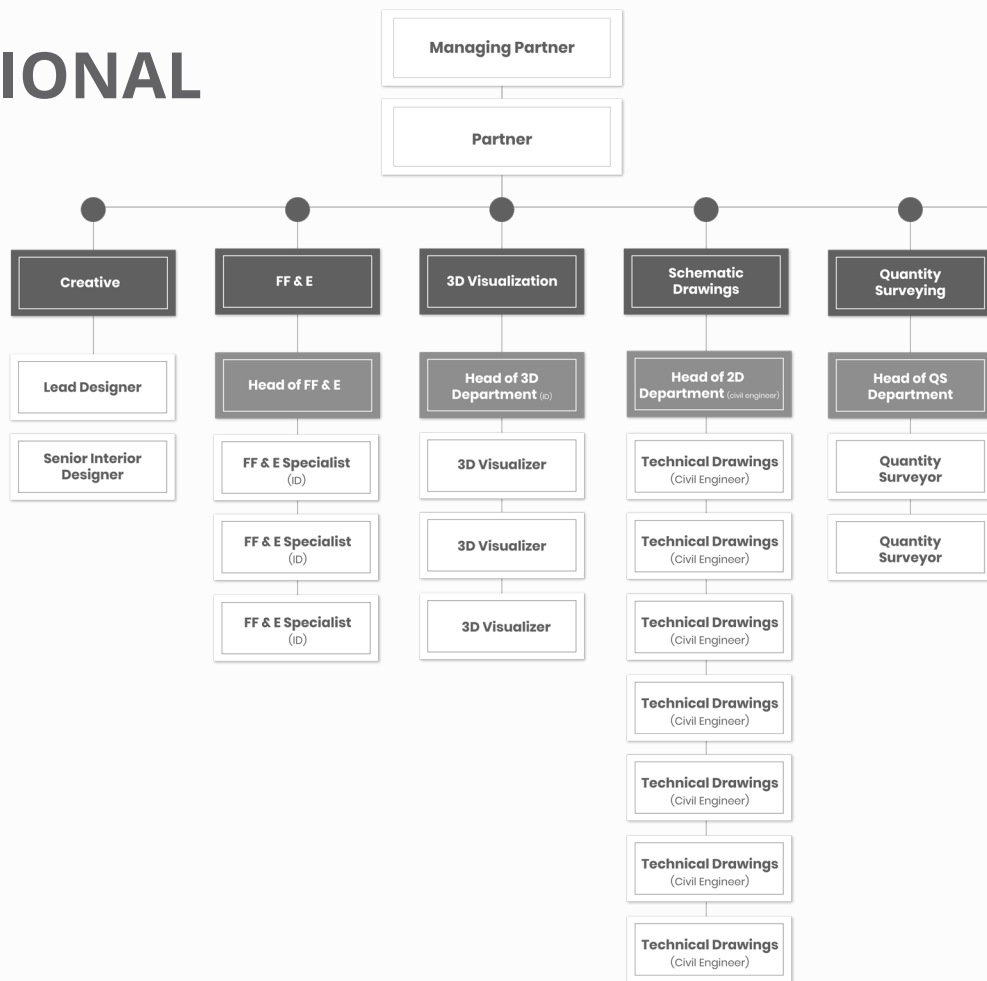
Description	Project Type	Task	Location	Year
Partial Design for Mr. Mahmoud Penthouse in Ocean Heights	Residential	Design & Execution	Dubai	2017
EMAAR - The Renovation of Entrance Lobbies & Public Toilet at Emaar Business Park - Building 3	Commercial	Design & Execution	Dubai	2017
Tecom - Fit-out Work Of the Foodcourt in Dubai Outsource City (DOC)	Commercial	Execution	Dubai	2017
ADIB - The interior design of a back-office in JAFZA	Bank	Design	Dubai	2017
ENOC - Furniture Standardization and Design Fit out Manual	Institutional	Design	Dubai	217
Emirates NBD - Tanfeeth Call Center	Bank	Design	Sharjah	2017
Tecom - Dubai International Academic City (DIAC); Conference Facility at Block 10: Ground Floor	Institutional	Execution	Dubai	2018
Emirates NBD - Nakheel Branch	Bank	Design & Supervision	Dubai	2018
Private Villa of Mr. Ali Bu Ali	Residential	Design & Execution	Abu Dhabi	2018
Starsh Café	Commercial	Design & Execution	Dubai	2018
Emirates NBD - Acoustic Consultation for the Board Room; Level 8 at Emirates NBD Headquarters	Bank	Design	Dubai	2018
Private Villa in Watqaa Third	Residential	Design	Dubai	2018
Emirates Investment Bank - Level 17: Festival Tower	Bank	Design & Execution	Dubai	2018
Abu Dhabi Islamic Bank (ADIB) - New Branch in Darmaki Building	Bank	Design & Supervision	Abu Dhabi	2018
Emirates NBD - Reception of Al Noor Training Center; Meydan Headquarters: Building Q	Bank	Design & Supervision	Dubai	2018
Emirates NBD - ENBD Security & GCM Offices; Jumeirah GTC Building: Al wasl	Bank	Design & Supervision	Dubai	2018
Emirates NBD - ENBD Jumeirah Branch: Al Wasl	Bank	Design & Supervision	Dubai	2018
Tecom - Refurbishment of Building 19 & 18, 17, 16, 10, 9, 4; Dubai Knowledge Park (DKP)	Institutional	Execution	Dubai	2018
Tecom - Renovation of the lift lobby, common corridor and Atrium area in Dubai International Academic City (DIAC)	Commercial	Execution	Dubai	2018
Mr. Mohammed Bin Ishaq - Private Villa in Nadd Al Hamar	Residential	Design	Dubai	2018
DMCC - Renovation of Ladies and Gents. Prayer Rooms	Commercial	Design & Execution	Dubai	2018
Emirates NBD - Ajman City Centre Branch	Bank	Design & Supervision	Ajman	2018
Emirates NBD - JBR Branch	Bank	Design & Supervision	JBR, Dubai	2018
Emirates NBD - RBS Sales Office at Unit 106 to 6; 606th Floor: Khalifa Park Tower	Bank	Design & Supervision	Abu Dhabi	2019
Emirates NBD - Abu Dhabi Branch: ENBD Head Office Building	Bank	Design & Supervision	Abu Dhabi	2019

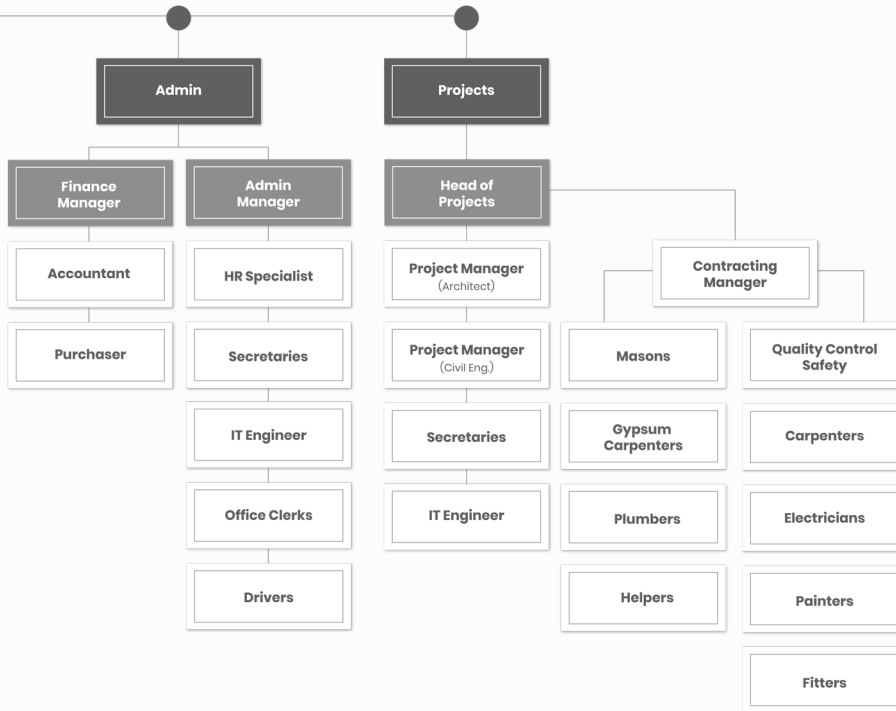
Description	Project Type	Task	Location	Year
Mr. Arif Al Harmi – Private Villa in Al Barsha	Residential	Design & Execution	Dubai	2019
ENOC – Interior Design for ENOC Training Center: Auditorium, Pre-function Area and Multi-purpose Lecture Rooms	Commercial	Design & Supervision	Dubai	2019
Mr. Nick Van De Wall (Afrojack) – Interior Design and Execution of Fit-Out Work for a Private Villa A16- at Limetree Villas Compound in Jumeirah Golf Estate; Dubai	Residential	Design & Execution	Dubai	2019
ENOC – Renovation of Main Lobbies at ENOC Head Quarters: House I, II & III	Corporate	Design	Dubai	2019
Emirates NBD – Renovation of the Main Façade of ENBD Branch in JBR	Bank	Design	Dubai	2019
EMAAR Community Management – Soft Furnishing of Tower A & B Lobbies	Commercial	Design & Execution	Dubai	2019
ENOC – Renovation of ENOC Learning & Development Centre located in ENOC Head Quarters: House II	Corporate	Design	Dubai	2019
ENOC – Interior Design for an Auditorium & Pre-function Area located in ENOC Head Quarters: House I	Corporate	Design	Dubai	2019
ENOC – Renovation of Prayer Rooms, Ablutions and lift Lobby at ENOC Head Quarters, House I – 4th Floor	Corporate	Design	Dubai	2019
ENOC – Renovation of GIA Majlis Located at ENOC Head Quarters, House I: Ground Floor	Corporate	Design	Dubai	2020
H.H. Princess Moneerah Al Assaf – Private Villa in Dubai Hills	Residential	Design	Dubai	2020
DMCC – Renovation of the Human Resources Office in Almas Tower, 49th Floor	Office	Design & Execution	Dubai	2020
Emirates NBD – Standard Retail Branch Located on the Ground & Mezzanine Floors of Unit 07 in Tilal Al Nasim Building 1: Makkah; KSA	Bank	Design & Supervision	Makkah, KSA	2020
CBI – Commercial Bank International Branch Located in Al Dana Tower: Buhaira Corniche Area; Sharjah	Bank	Design & Supervision	Sharjah	2020
Mr. Sultan Alhjeilan – Interior Design of a Private Villa in Al Khobar; KSA	Residential	Design	Al Khobar, KSA	2020
ENOC – MEP Consultation for ENOC Legal Department Located in House I at ENOC Head Quarters	Corporate	MEP Design	Dubai	2020
Emirates NBD – ENBD Branch & Sales Office Located on Ground & Mezzanine Floors: Units D1, D2 and D3 at Sultana Garden Mall	Bank	Design & Supervision	Madinah, KSA	2020
STAMINA GYM – Interior Design & Execution of a Commercial Gymnasium, at Dubai Studio City; Dubai	Commercial	Design & Execution	Dubai	2020
TECOM – Enhancement Work for Master Card Building in Dubai Internet City	Commercial	Execution	Dubai	2020
ENOC – Interior Design and Execution of Work for the Renovation of CEO Suite in House 1 at ENOC Head-Quarters; Dubai	Corporate	Design & Execution	Dubai	2020

Description	Project Type	Task	Location	Year
Emirate NBD – Branch and Sales Office located on Ground & Mezzanine Floor in unit D1, D2 & D3 at Sultana Gardens Mall; Madinah, KSA	Bank	Design	Madinah, KSA	2020
Emirates NBD- Interior Design Services for Emirates NBD & Emirates Islamic Bank Branches in the Welcome Plaza – Pavilion 12 at EXPO 2020; Dubai	Bank	Design & Supervision	Dubai	2020
Mandarin Oriental Jumeirah – Rectification of Rainwater Damage to Interior Finishes; Dubai	Hospitality	Execution	Dubai	2020
TECOM Group – Renovation and Relocation of Distribution Board (DB) at Headquarters complex in Dubai Biotechnology & Research Park Ground floor North Tower, Dubai	Corporate	Execution	Dubai	2020
IGOR Private Villa – Supply & Installation of Zine Stone to a TV Wall and a Bar Unit	Residential	Execution	Dubai	2020
Mr. Nick Van De Wall (Afrojack) – Interior Design and Execution of Partial Renovation for a Private Studio at Villa A17- in Limetree Villas Compound, Jumeirah Golf Estate; Dubai	Residential	Design & Execution	Dubai	2020
EMAAR – Kitchen Works	Commercial	Execution	Dubai	2020
Concordia – Reinstatement of a Leased Space into detached Retail Units R06-, R05- & Q05- in Almas Tower – JLT; Dubai	Retail	Execution	Dubai	2020
TUV Rheinland Middle East LLC – Supply and Installation of COVID 19 Office Shield; Dubai	Office	Execution	Dubai	2020
Mrs. Nisha Saluja Supply and Installation of Loose Furniture for a Private Apartment No. 902 in Volante Tower; Dubai	Residential	Design & Execution	Dubai	2020
Mandarin Oriental Jumeirah – Repair Works at Room 236 and 501; Dubai	Hospitality	Execution	Dubai	2020
Mandarin Oriental Jumeirah – Supply and Installation of Timber Decorative Moveable Partition in Netsu Restaurant & Bar; Dubai	Hospitality	Design & Execution	Dubai	2020
ENOC – Interior Design and Execution Work for the Renovation of CEO Suite & PA Office	Corporate	Design and Execution	Dubai	2020
H.H. Sheikh Hasher Ahmed bin Juma Al Maktoum – Design & Execution of the Master Bedroom and Bedroom 4 & ,3,2,1 in a Private Villa in Nad Al Shiba; Dubai	Residential	Execution	Dubai	2020
International Development Bank – Waterproofing work, JLT; Dubai	Bank	Execution	Dubai	2020
Emirates NBD – Schematic Design for the ATM lobby in Madinah Branch; KSA	Bank	Design	KSA	2020
Emirates NBD – Interior Design for ENBD Branch Located in Dubai Airport Terminal 3; Dubai	Bank	Design	Dubai	2020
Mandarin Oriental Jumeirah – Modification Work in Presidential Suite; Dubai	Hospitality	Execution	Dubai	2020
TECOM – PT 267 – Design and Execution for the Renovation of the Common Areas and Public Toilets at Dubai International Academic City (DIAC) Building 1 to 12 + Food Court	Institutions	Design & Execution	Dubai	2021

Description	Project Type	Task	Location	Year
Mandarin Oriental Jumeirah – Design and Execution of a welcome Centre and a Beach Kiosk; Dubai	Hospitality	Design and Execution	Dubai	2021
Mr. Yusuf Kurrimnoccus – Design and Execution of Work for the Bathrooms and Kitchen at Townhouse 15 on Street 1 in Morella Village, Victory Heights, Sports City; Dubai	Residential	Design and Execution	Dubai	2021
ENOC – Interior Design and Execution of Work for the Renovation of CEO PA Office in House 1 at ENOC Head-Quarters; Dubai	Corporate	Design and Execution	Dubai	2021
H.H. Sheikh Hasher Ahmed Bin Juma Al Maktoum – Design & Execution of the Common Areas and Bathrooms in a Private Villa in Nad Al Sheba; Dubai	Residential	Design and Execution	Dubai	2021
EMAAR – Renovation of Entrance Lobbies – (6) Towers in Marina; Dubai	Commercial	Design & Execution	Dubai	2021
Emirates NBD – Renovation of ENBD Branch located at Ground Floor of Burj Al Arab Hotel, Dubai	Bank	Design & Supervision	Dubai	2021
Emirates NBD – Renovation of ENBD Branch Located on the Ground & Mezzanine Floor of the JAZ Building – Banks Street; Jebel Ali Freezone	Bank	Design & Supervision	Dubai	2021
EMAAR – Supply & Installation of Loose Furniture at the Library in the Lofts; Dubai	Commercial	Design & Execution	Dubai	2021
Mandarin Oriental Jumeirah – Upgrading of Junior Suite & Interconnecting Rooms, Dubai	Hospitality	Design & Execution	Dubai	2021
Mandarin Oriental Jumeirah – Design & Execution of Beach Changing Rooms	Hospitality	Design & Execution	Dubai	2021
Mandarin Oriental Jumeirah – Design & Execution of Beach Toilets and Showers, Dubai	Hospitality	Design & Execution	Dubai	2021
TECOM – Minor Renovation of DSC Management Office	Institutions	Design	Dubai	2021
Mrs. Azza Refaat – Partial Renovation at a Private Residence, Sharjah	Residential	Design & Execution	Sharjah	2021
Emirates NBD – Interior Design Services for ENBD Branch Located in Assila Tower – Prince Mohammed Bin Abdul Aziz Street, Al Tahliya; Jeddah: KSA	Bank	Design & Supervision	KSA	2021
TECOM – Design, Manufacture and Installations of Benches and Seats for the Common Areas in Bluewater Mall, Dubai Eye	Commercial	Design & Execution	Dubai	2021
Emirates NBD – The Development of a Design concept and Details' Drawings for a Typical Retail Branch – ENBD Branch in Mall of the Emirates; Dubai	Bank	Design & Supervision	Dubai	2021
DMCC – Design of the Service Centre Located at the 1st Floor – Almas Tower, JLT; Dubai	Corporate	Design	Dubai	2021
Mandarin Oriental Jumeirah – Minor Renovation Work in NETSU Restaurant; Dubai	Hospitality	Design & Execution	Dubai	2022
STAMINA Gymnasium – The Design & Execution of a Theme Gymnasium offering Gymnastic Courses to Teenagers and Adolescent.	Commercial	Design & Execution	Dubai	2022
IDB Bank – Minor Renovation and Maintenance Work, Dubai	Bank	Design & Execution	Dubai	2022
Mrs. Sonia – Design & Execution of Fit-Out work in Villa No. D100 located at Flame Tree Ridge, Jumeirah Gulf Estate, Dubai	Residential	Design & Execution	Dubai	2022
Mandarin Oriental Jumeirah – Design, Supply and Installation of Decorative Screens in the Bay Restaurant, Dubai	Hospitality	Design & Execution	Dubai	2022

ORGANIZATIONAL CHART







CONTACT INFO



Address

Suite 108 - Apricot Tower -
Dubai Silicon Oasis -
P.O. Box 34156 -
Dubai, UAE

Phone

+971 (4) 3337745

Phone

+971 (4) 3337749

Email

info@designdesignllc.com

Website

www.designdesignllc.com